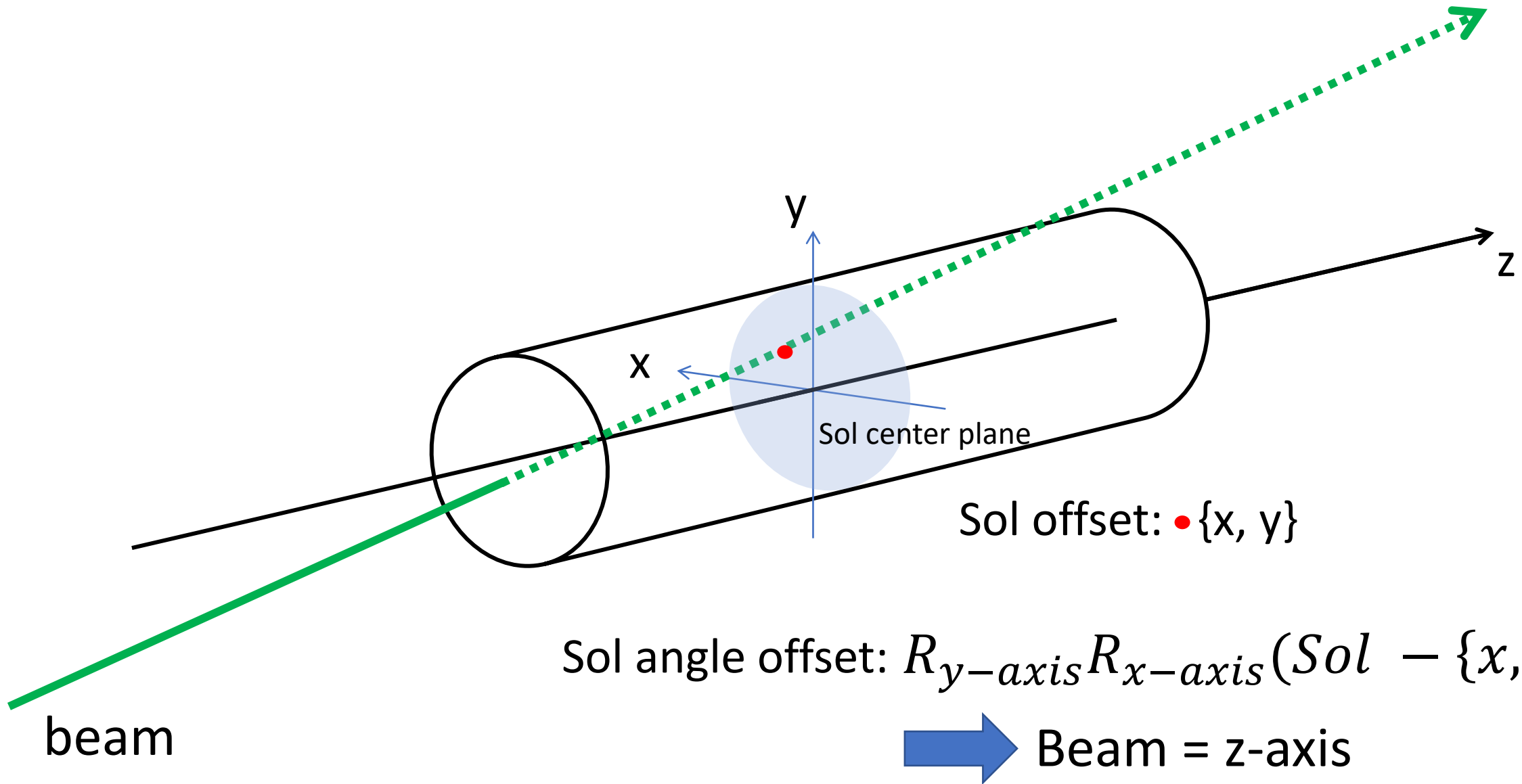


# Solenoid Misalignment Scan

Kai Shih

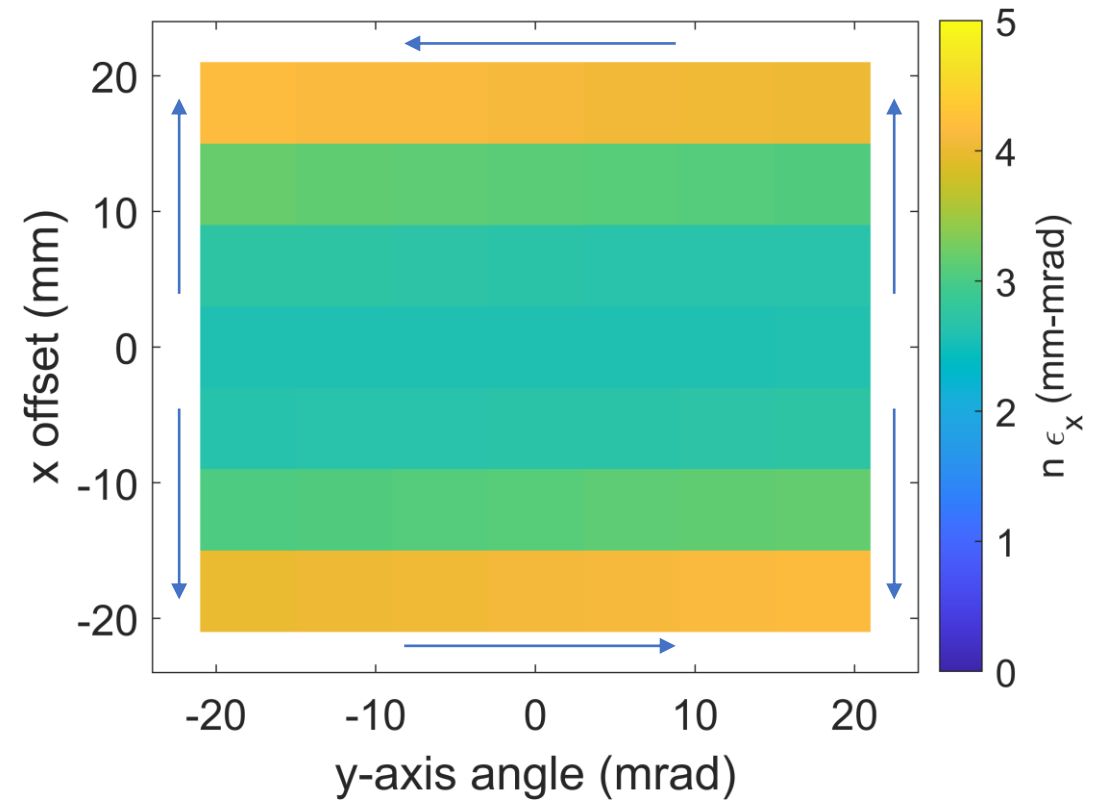
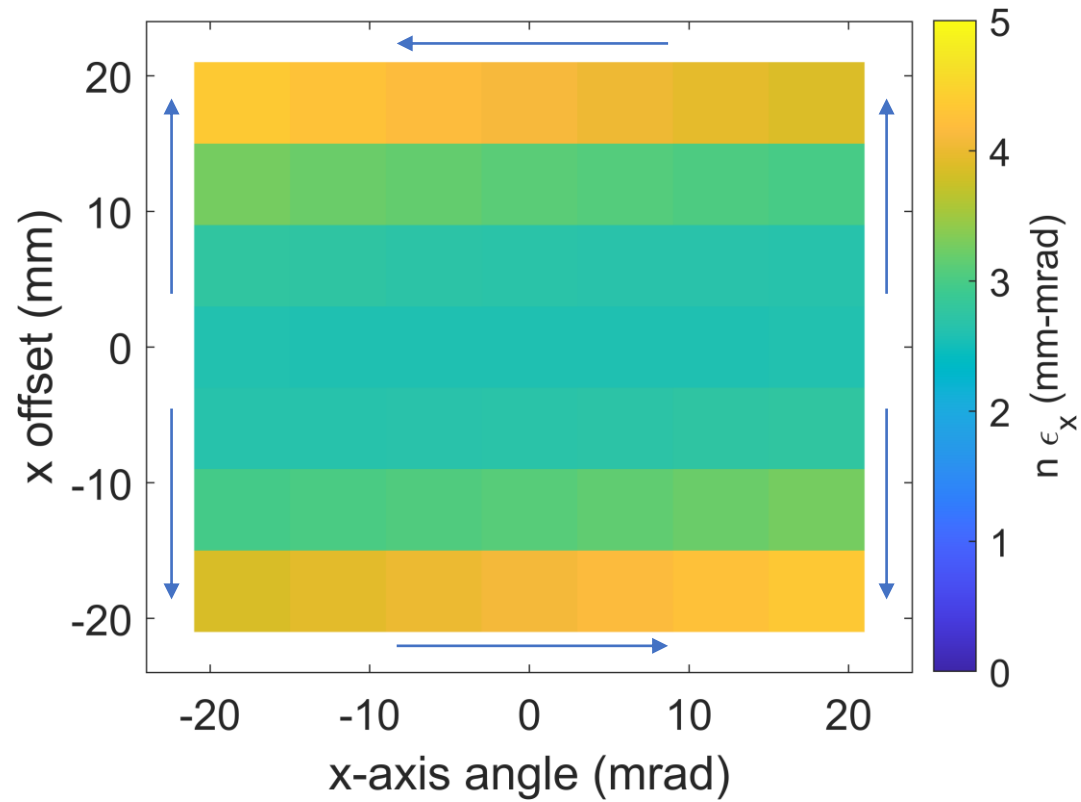
10/26/2022



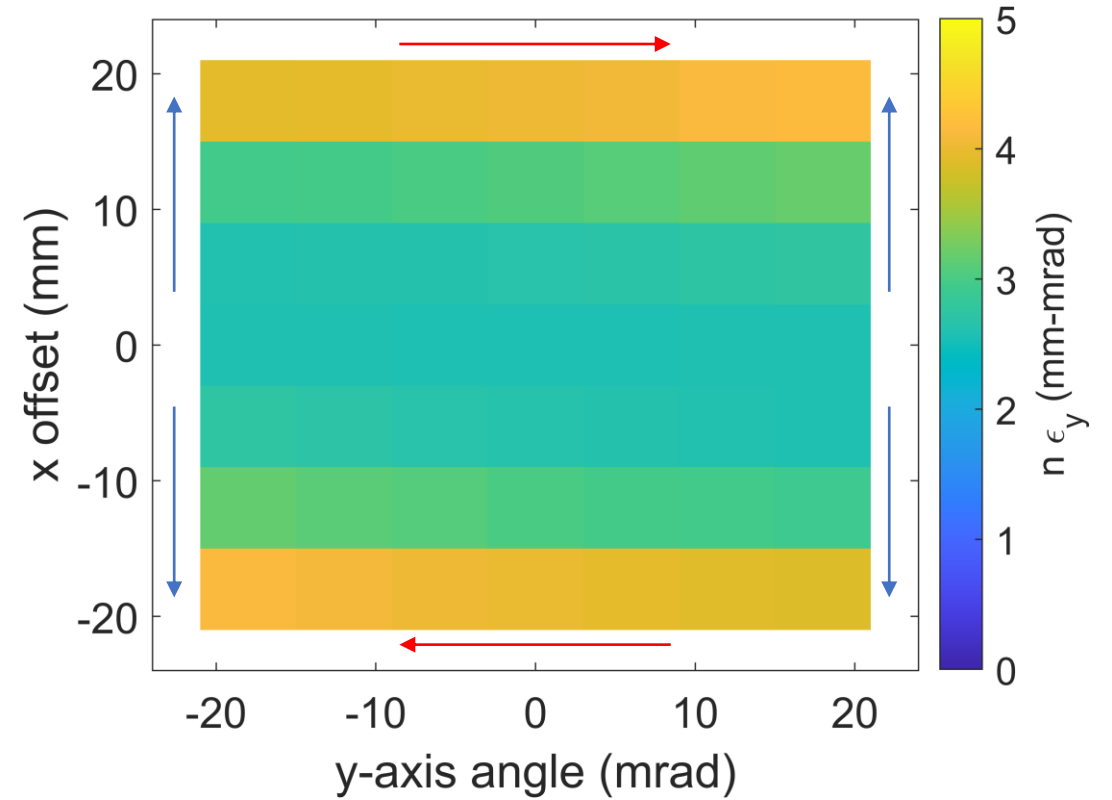
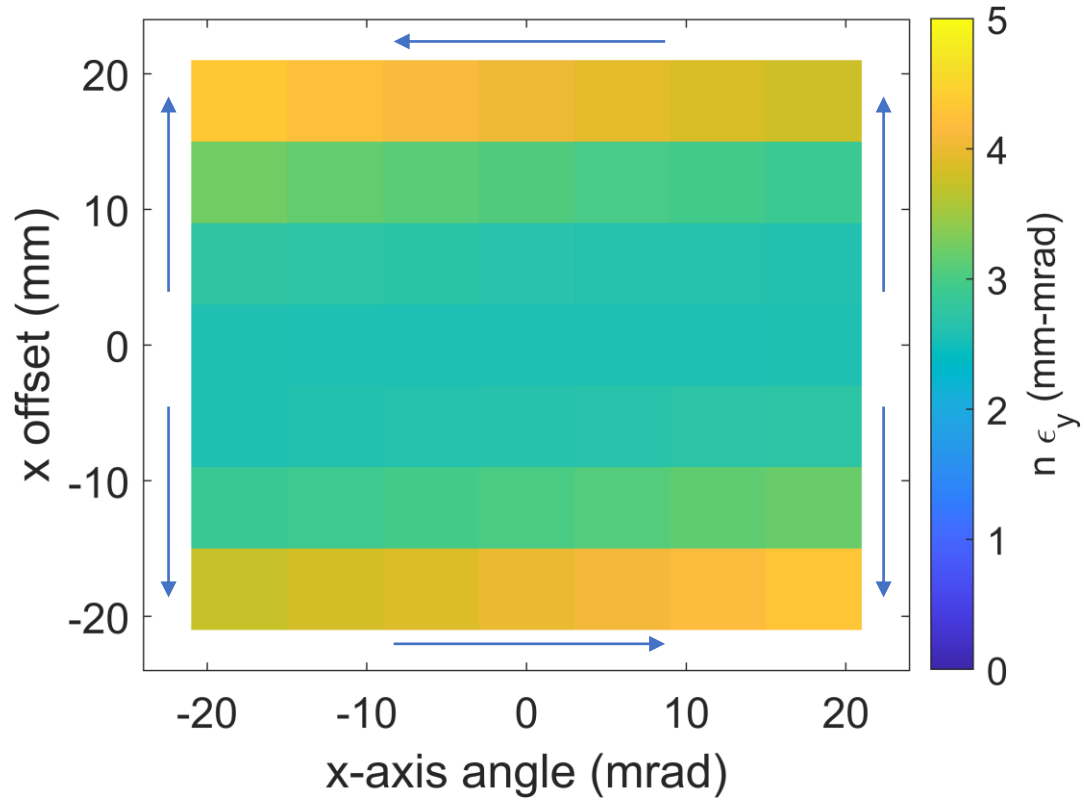
Sol angle offset:  $R_{y-axis} R_{x-axis} (Sol - \{x, y\})$

➡ Beam = z-axis

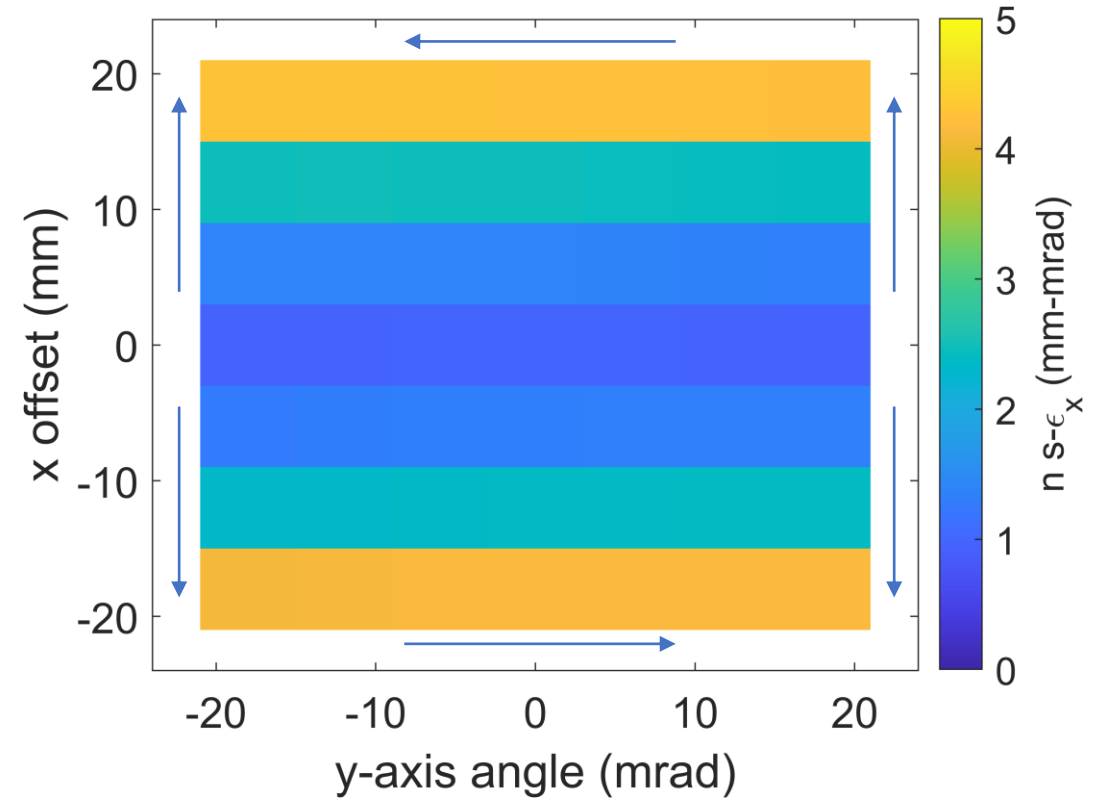
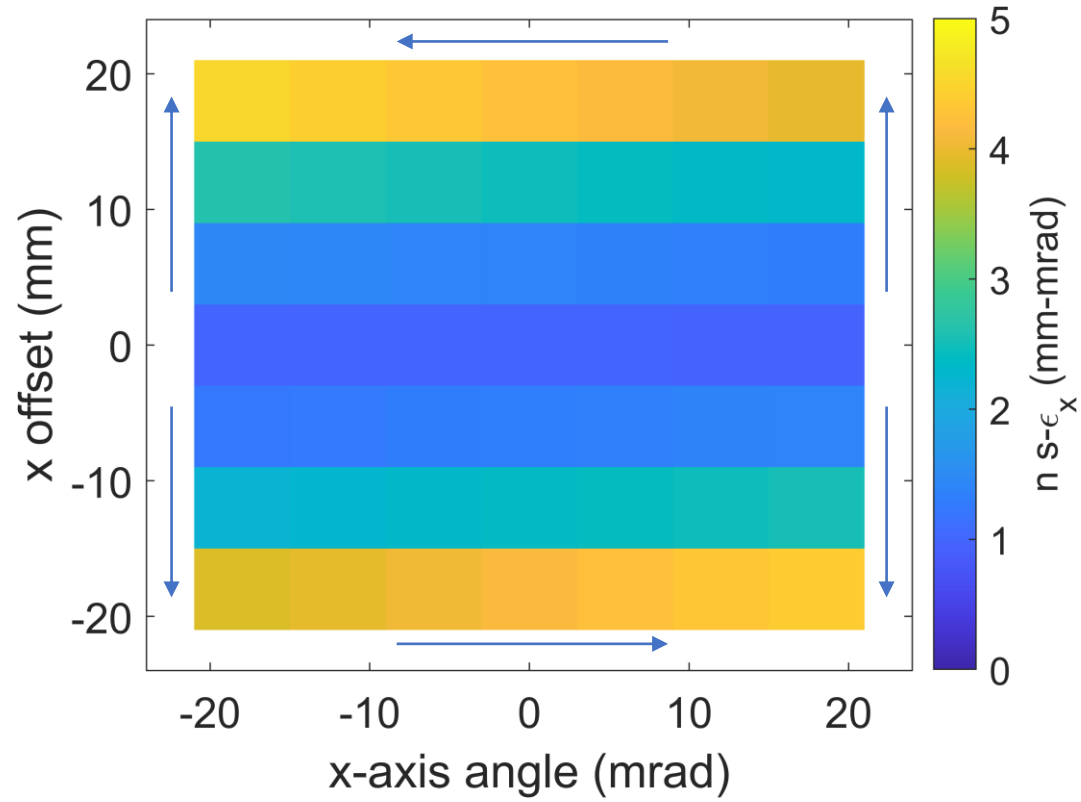
### Projective Emittance x



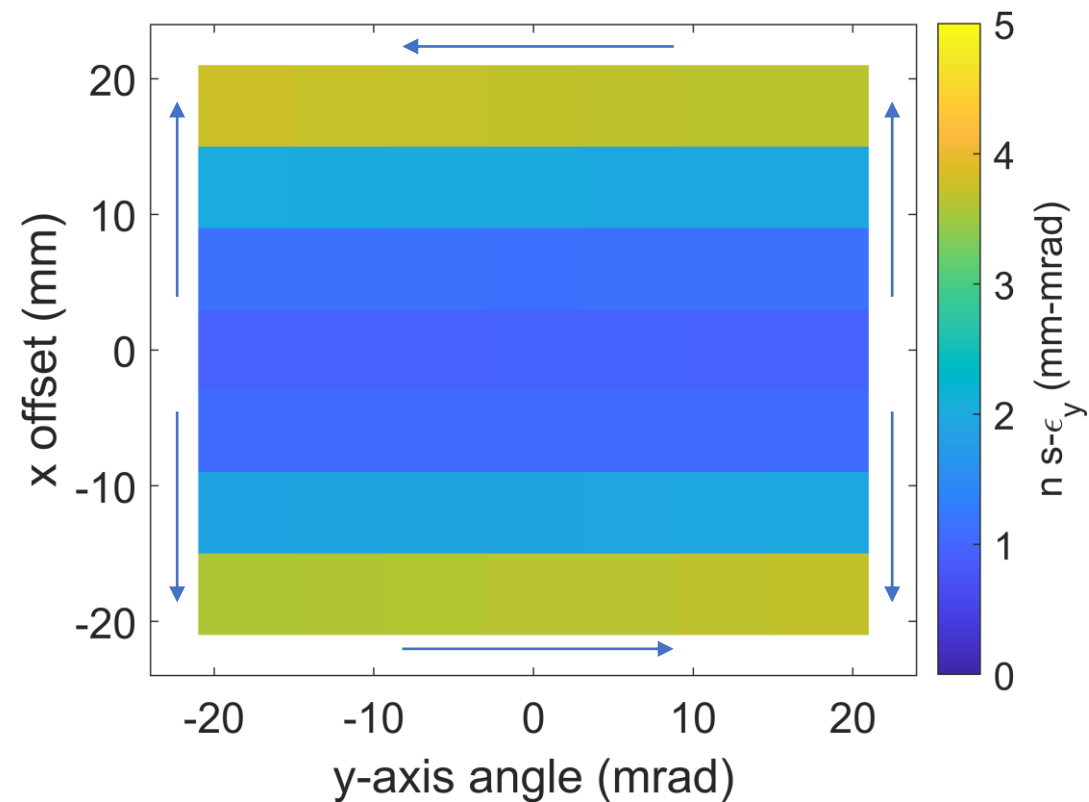
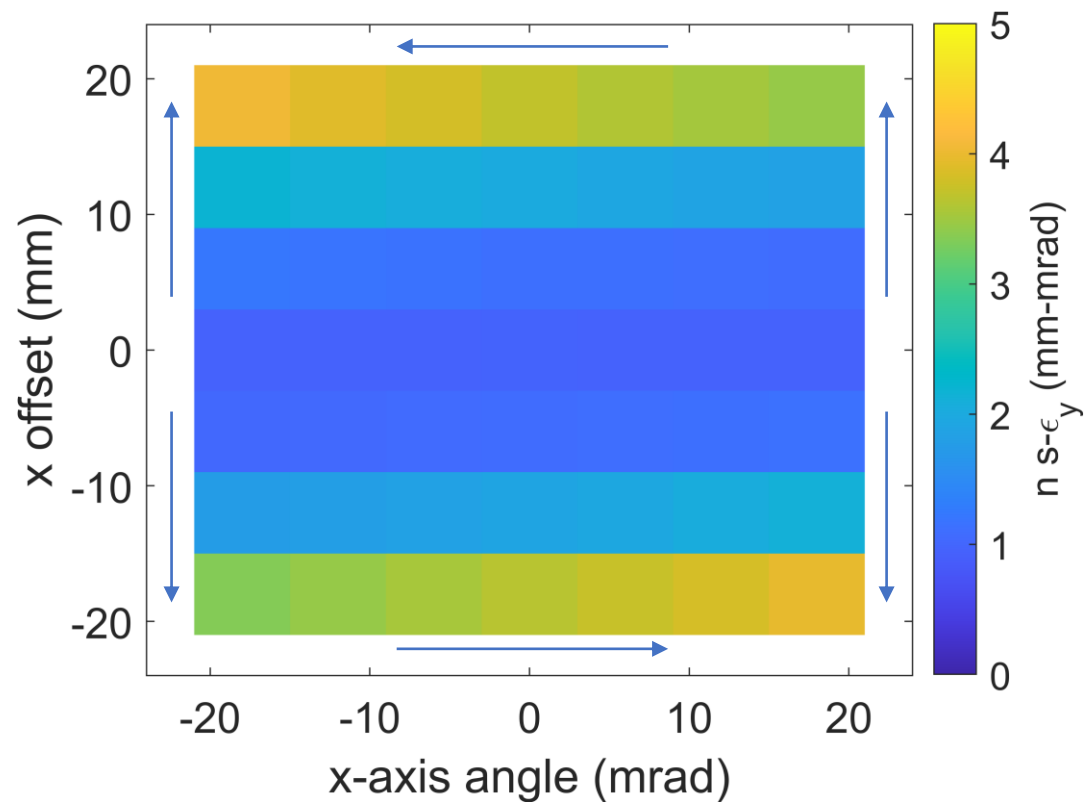
### Projective Emittance $y$



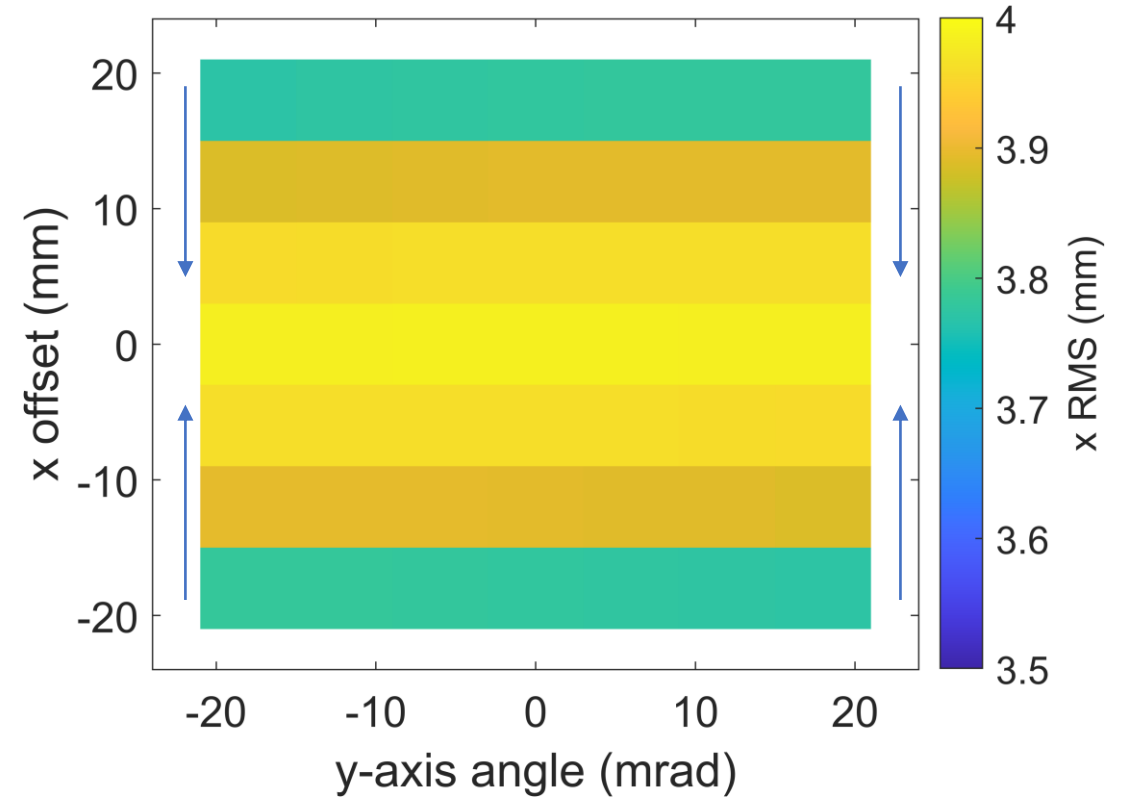
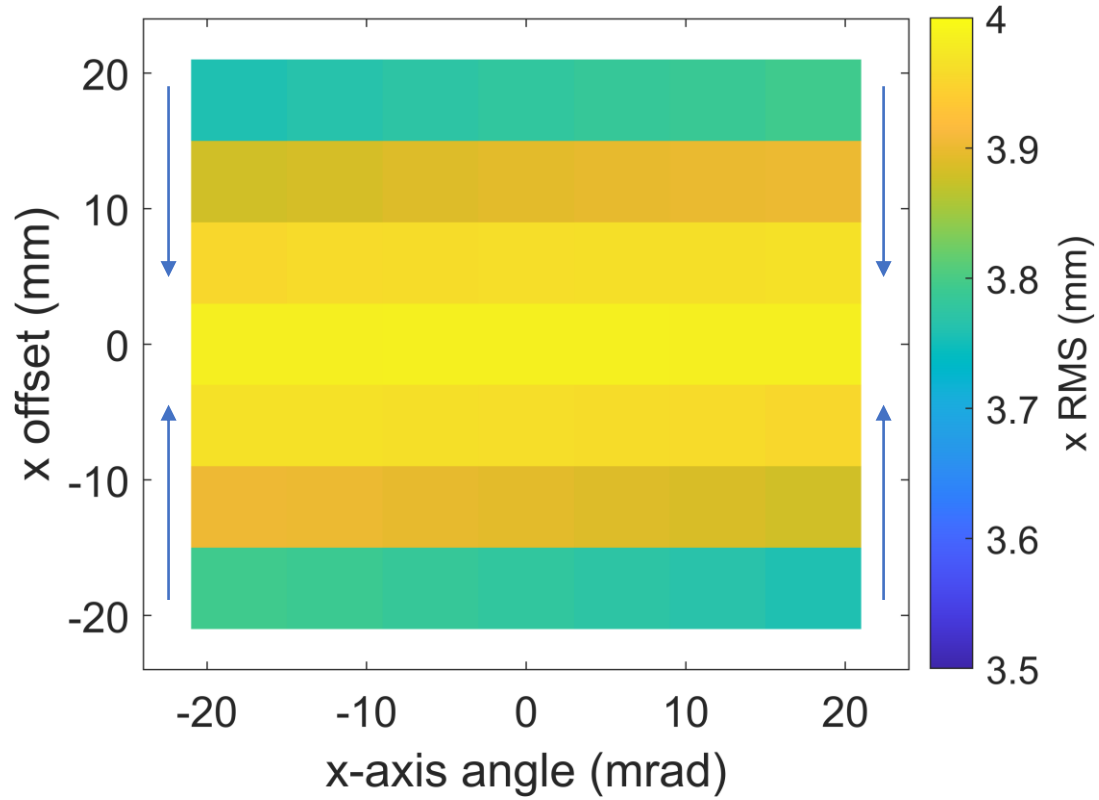
### Slice Emittance x



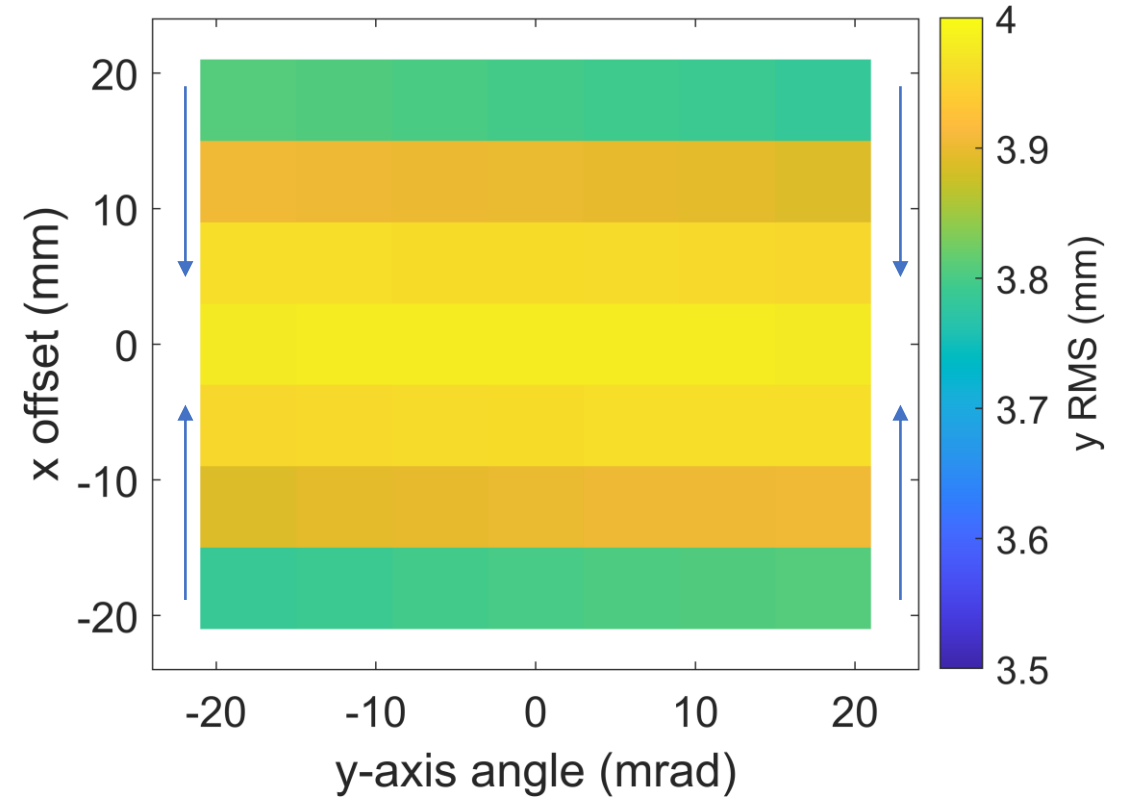
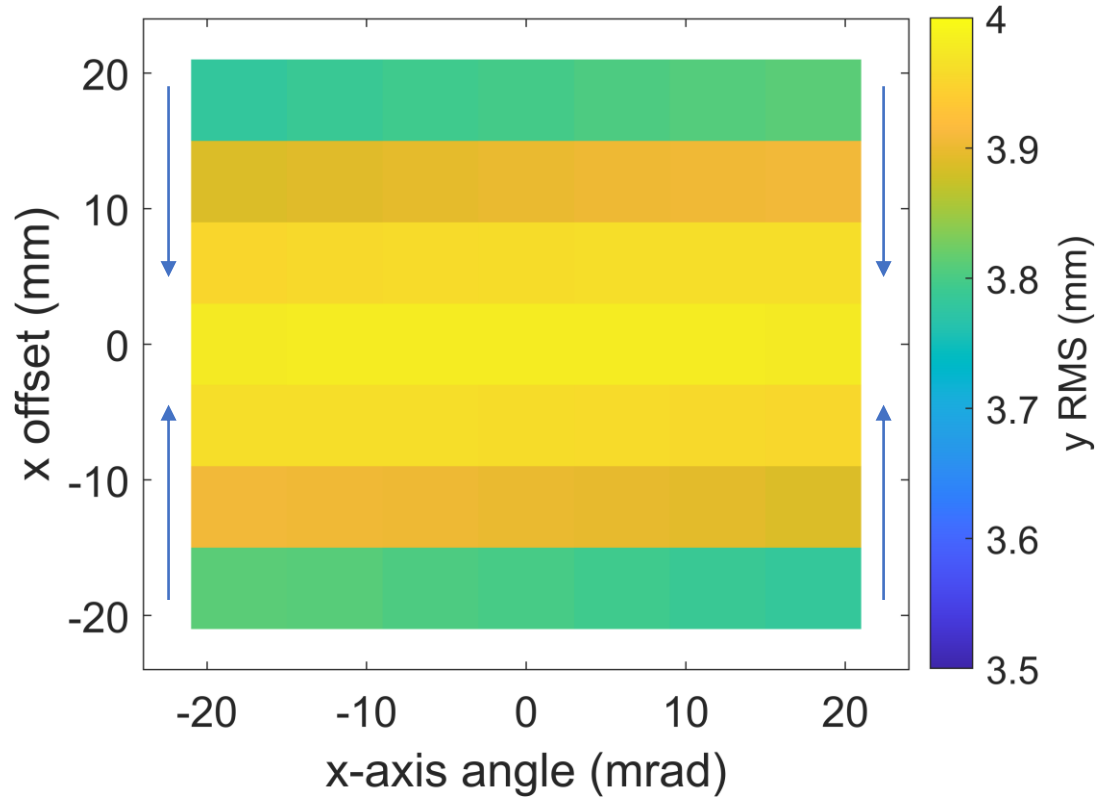
### Slice Emittance $y$



### Projective RMS x

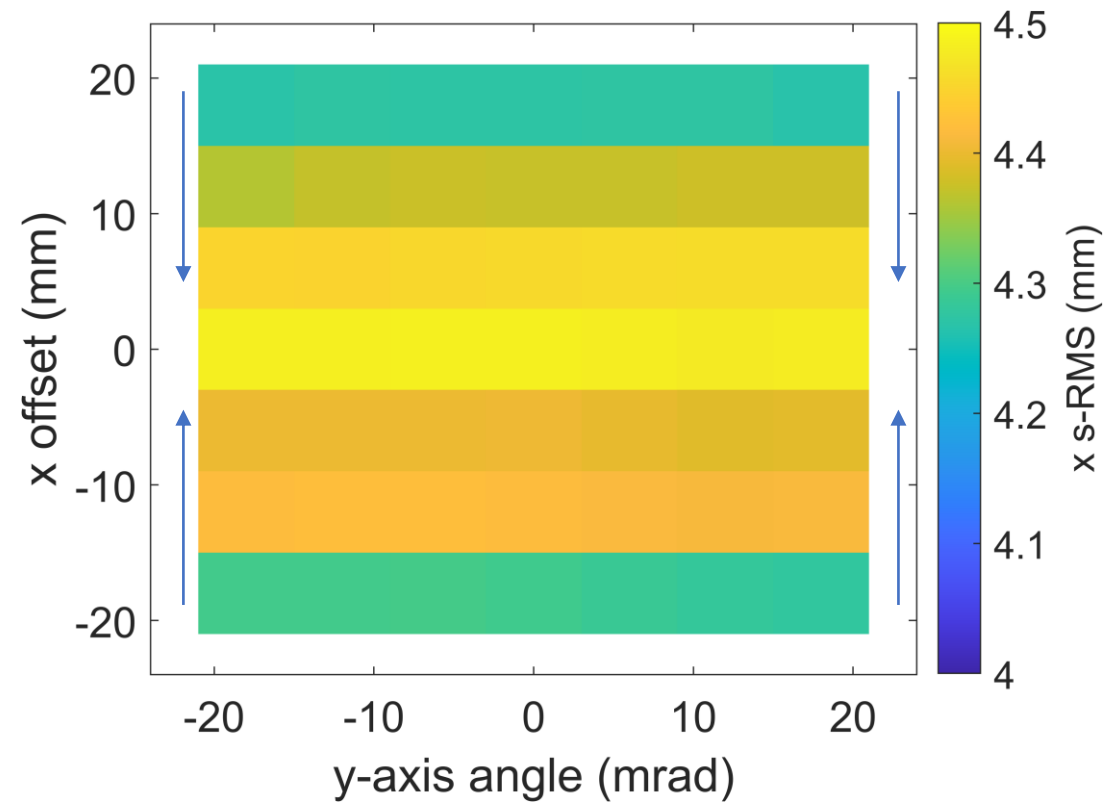
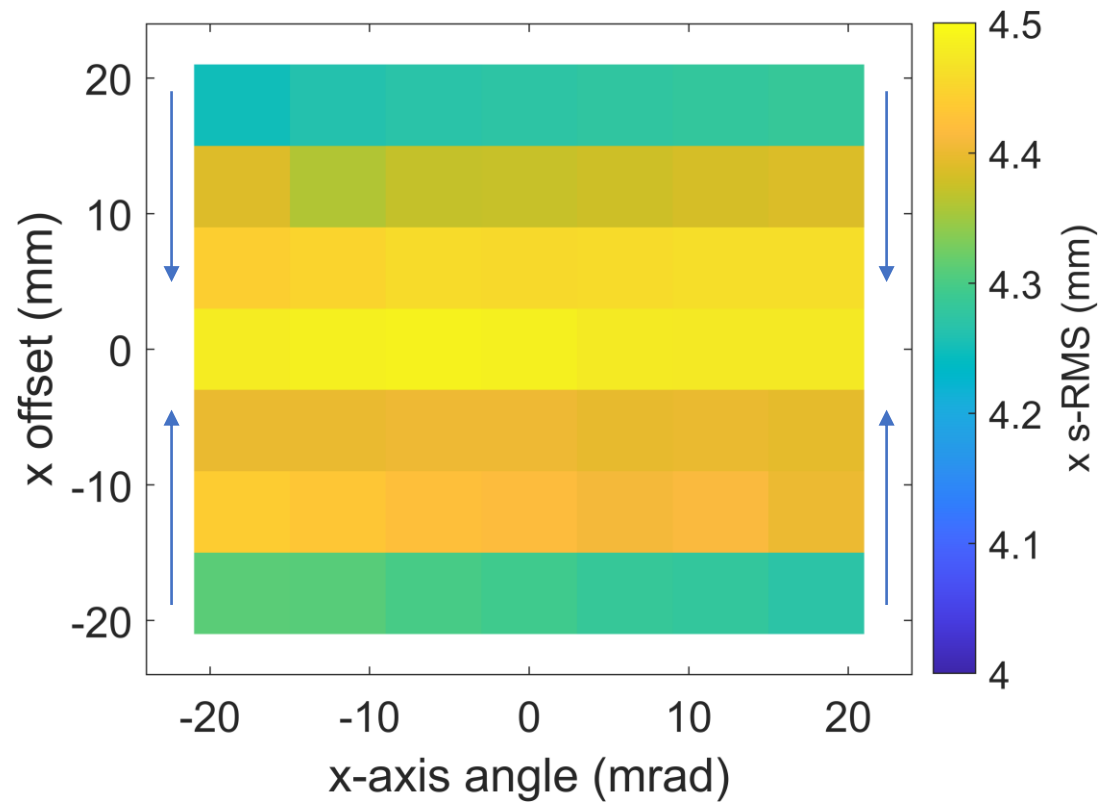


### Projective RMS y

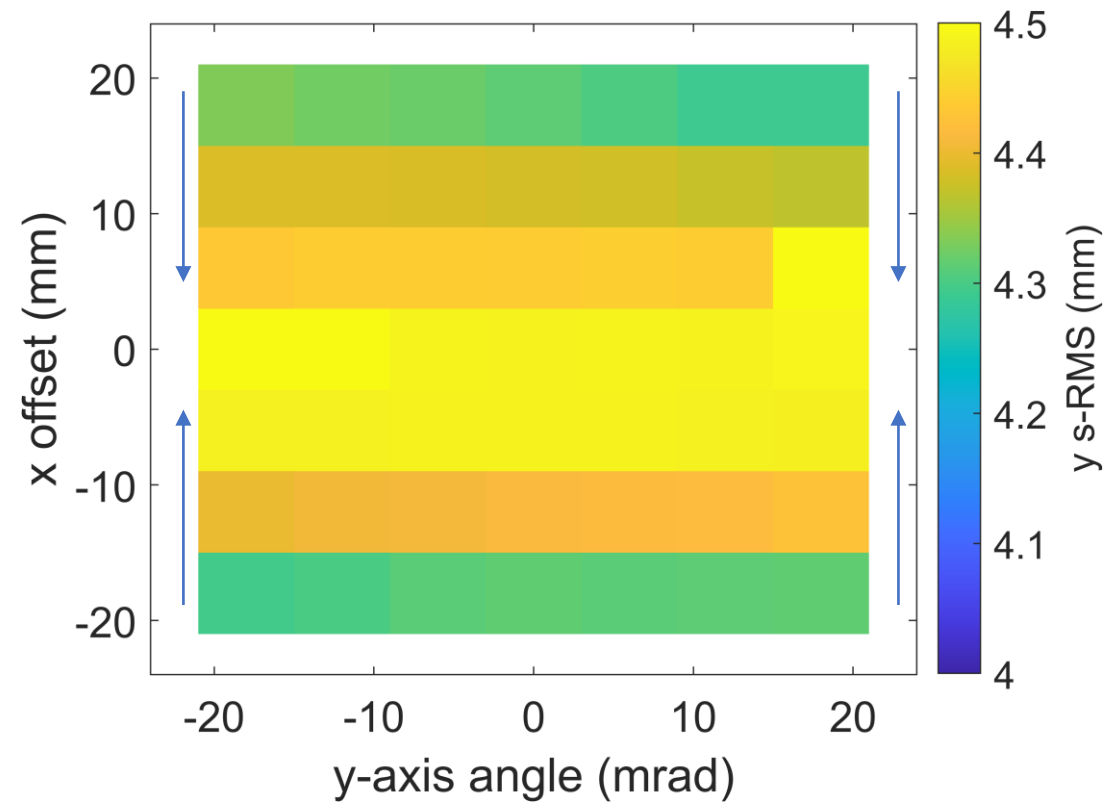
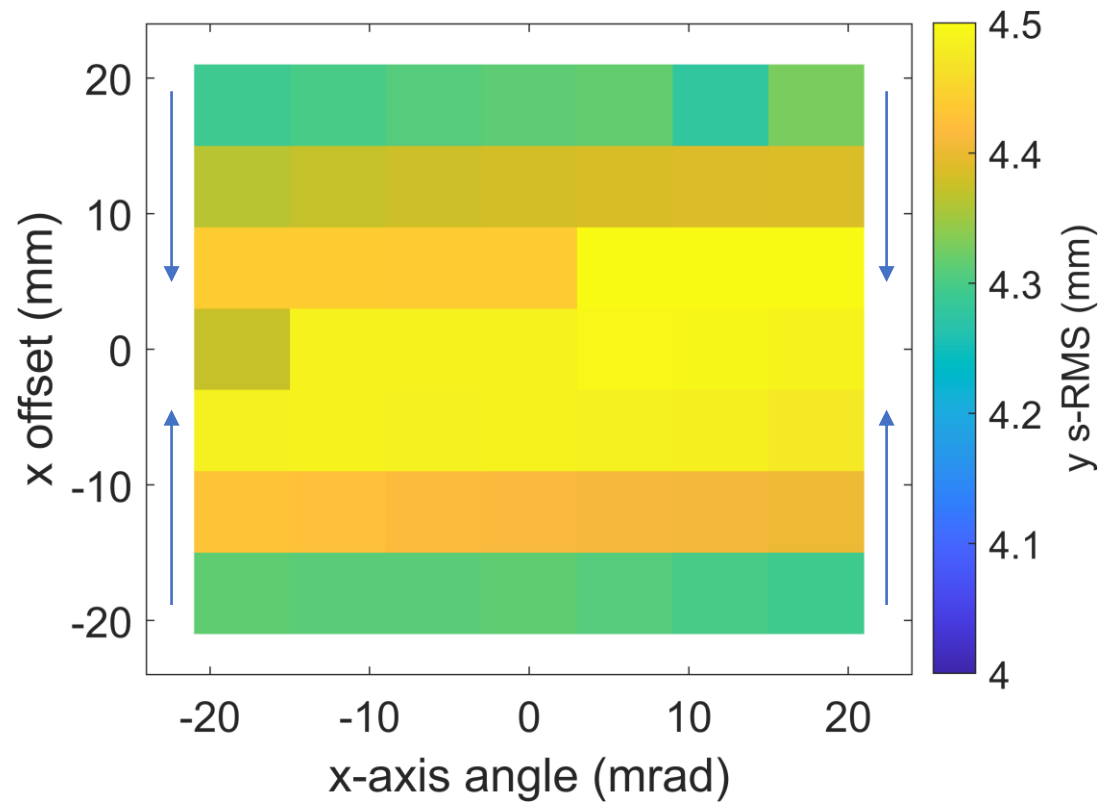




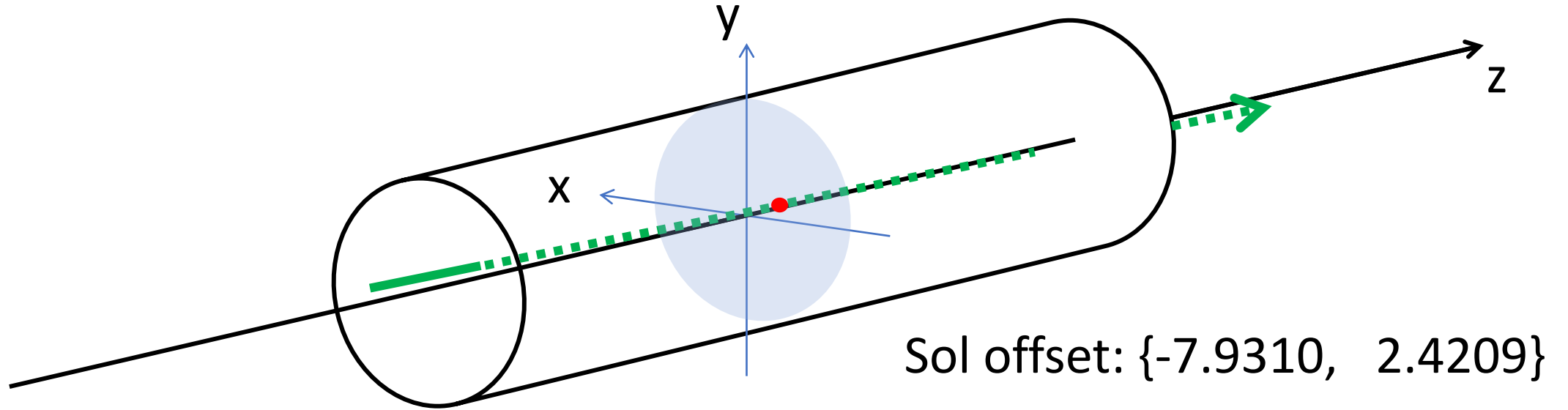
Slice RMS x



Slice RMS y



CeC



Sol offset: {-7.9310, 2.4209}

Sol angle offset: {3.7492, 12.5445}  
x-axis y-axis